

4.3 Script-based installation

Script-based installation

Automated installation via batch file or PowerShell script, e.g. for integration into a software distribution, is easily possible. However, please note that any changes to program requirements, modules, catalogs and parameters ***must be managed independently***.

Important:

As the various cadwork modules are highly dependent on each other, they should always be considered as a complete package. For example, if only the 3D module is installed in an older version, this can lead to press transfer problems between 3d and 2D.

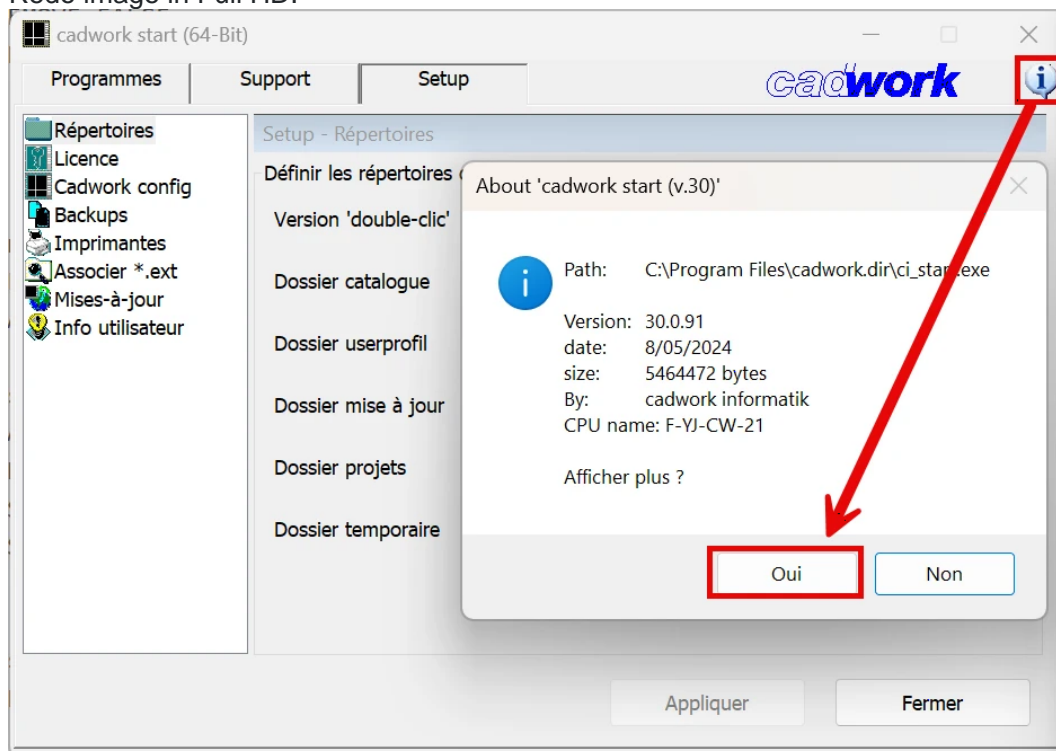
Regular cadwork updates are **important**, and can be guaranteed using the update server installation or via offline installation.

They should be performed at the latest when a problem is encountered by a user.

On the following pages you'll find scripts for the various cadwork versions.

You'll find an exhaustive list of the arguments available with cadwork start by clicking on the info (button "i" at top right of ci-start -> **YES** to display more information).

Redo image in Full HD.



Display all possible command line arguments to the ci-start.