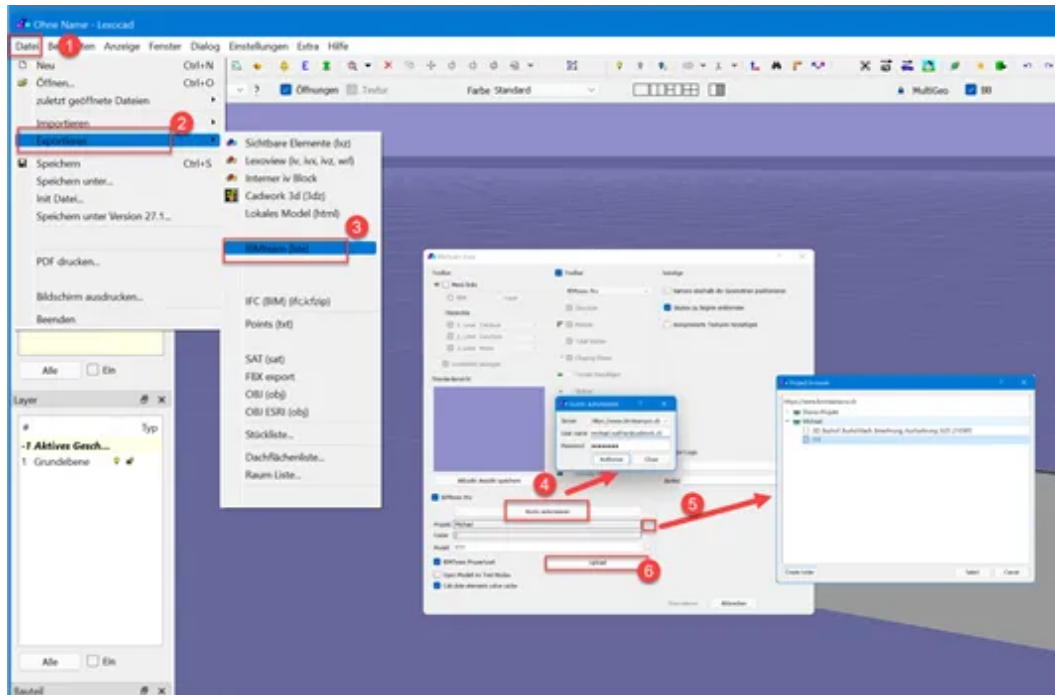


## 5.70 export BIMteam

In order to use BIMteam, a user account is required and the code "89 BIMteam" must be activated in lexocad.

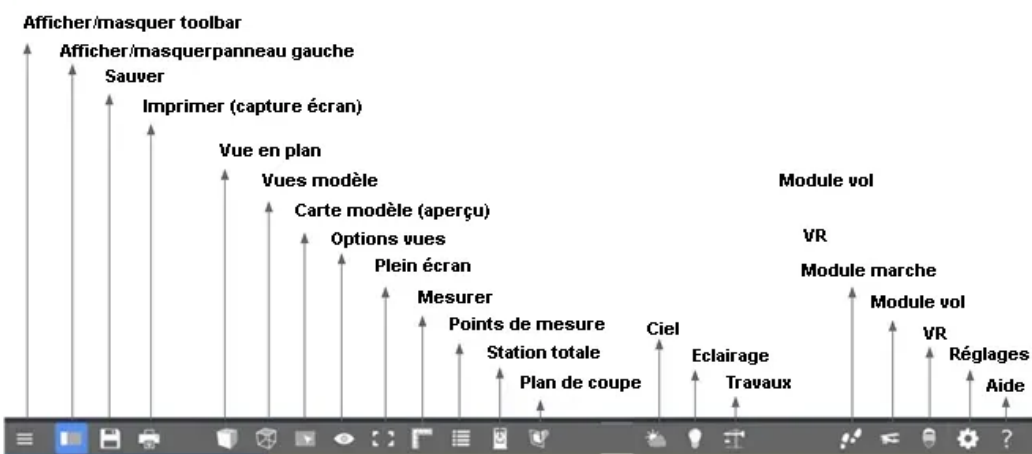
For a model to be downloaded via Lexocad, at least one project must be created in BIMteam.

In Lexocad, you must log in to the account once and select a project folder for a model to be uploaded:



Here is some additional information about BIMteam and the viewer:

### Viewer BIMteam - Toolbar



## Plateforme BIMTeam - Management des données et collaboration

Upload possible depuis différents types de fichiers (jpg, pdf, txt, ...)

**Upload depuis des fichier BIMteam (bte)**

## Aperçu activités

## Réglages projet

**Personnaliser  
accès**

**Partager le modèle**  
via le lien

Ajouter commentaire