

1.2 Screen after start

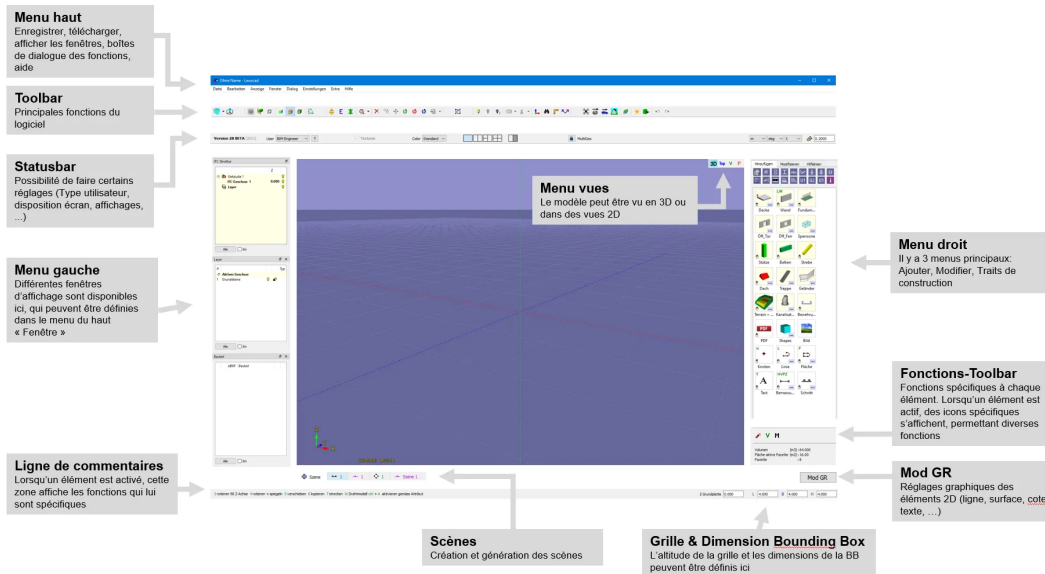
This article can be accessed by clicking with the middle mouse button M on the version number in lexocad:



→ Version 29 BETA (2022)

Below is an overview of all the relevant points to know about the lexocad start screen.

Each point is detailed in a separate chapter.



Brief description of the different domains

Top menu

This menu includes different areas with various options, such as:

- File: save, import, export, print PDF
- Dialogue: BIM functionalities
- Help: overview of abbreviations, learning opportunities
- etc.

Toolbar

Several key functions can be performed via the toolbar.

Statusbar

In the statusbar, there are setting options such as user type, color scheme, views and so on.

Left menu

This menu displays the windows that are activated in the menu at the top of the "Window" section. The size and positioning of windows in the left-hand menu can be changed manually.

Comment line

The comment line shows the various options available in the selected function. Green letters and numbers indicate keyboard shortcuts, as well as the mouse button to select.

L = Left mouse button

M = central mouse button

R = right click

A list of keyboard shortcuts and mouse options can be found in the "Help" menu at the top of the page.

Scenes

This area displays the various scenes created. The color of the name depends on the type of scene (3D, top view, cross-section, etc....).

Bounding Box grid and dimensions

In this area, the base height (grid in the graphics window) can be defined. You can also define the height, width and length of an element.

Modifications-Toolbar

The editing toolbar only appears when an element is activated and there are options specific to that element.

Right menu

The right-hand menu contains three sections: Add, Modify and Construction lines. To change zones, the corresponding tab must be activated (at the top of the zone).

View menu

The View menu allows different views of the model, which can be visualized in 3D or 2D.