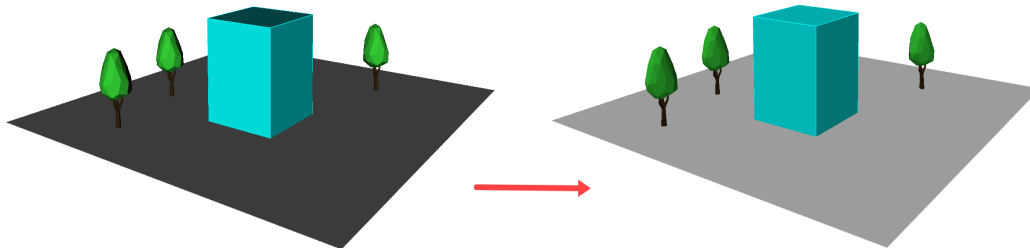


4.1.25 Lighting controls

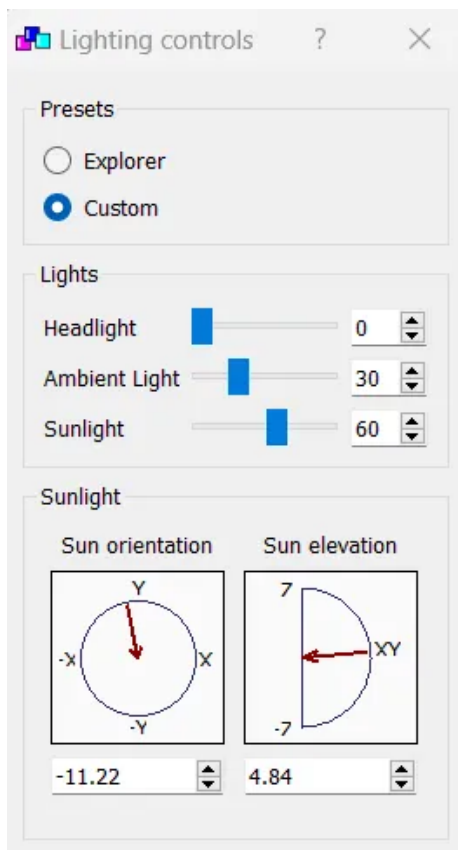
The "Light setting" or "Lighting control" function is located in the toolbar:



If "Light setting" is activated, the lighting conditions are shown differently.



With R on the "Light setting" icon, the lighting control parameters can be called up and changed:



The position of the sun (orientation + elevation) can be changed by moving the direction indicator with the mouse.