

## 6.1.11 4D Construction Process Basis

**Tutorial video:**

### **Description:**

#### **Step 1: Import IFC**

1. Open with Lexocad BIM Viewer  cadwork Start Application

2. press Lexocad icon



3. important: save Lexocad file first

#### **Step 2: Staging model**

There are several ways to stage the model with cutting functions. (See also article cut through)

One possibility is to use Top View

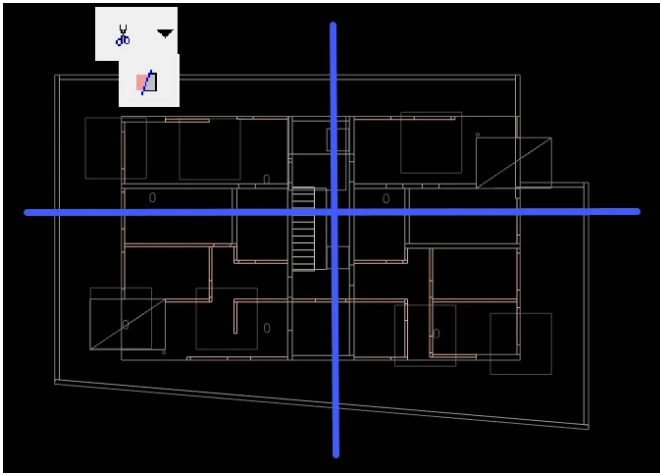


--> Line

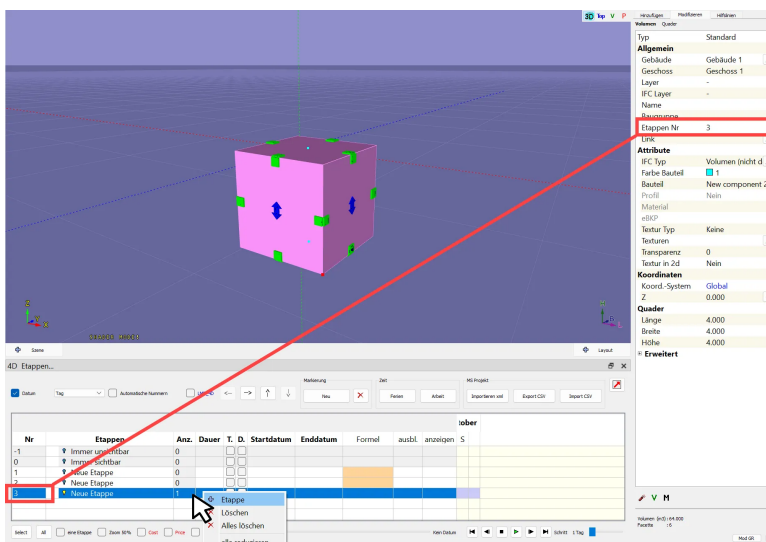


--> Cut





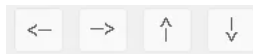
### Step 3: Open 4D Stages dialog, create and assign stages



Add stage: Right mouse button

Assign stages: Activate the element and enter the number in the "Stage no." field in the modification area.

Subordinate stages: Arrows



Columns:

- Stages no: representation of the sequence
- No.: Number of elements in the stage
- Duration: days
- T.: Elements only visible between start and end date (Temporary)
- D.: Elements always visible and invisible if end date (deconstruction)
- Formula: Stage no. can be entered. The stage starts only after the stage no. entered.
- Hide: Stage no. can be entered. The entered stage is hidden between the start and end date.
- Display: Stage no. can be entered. The entered stage is displayed between the start and end dates.
- Colour: The elements can be coloured by stage